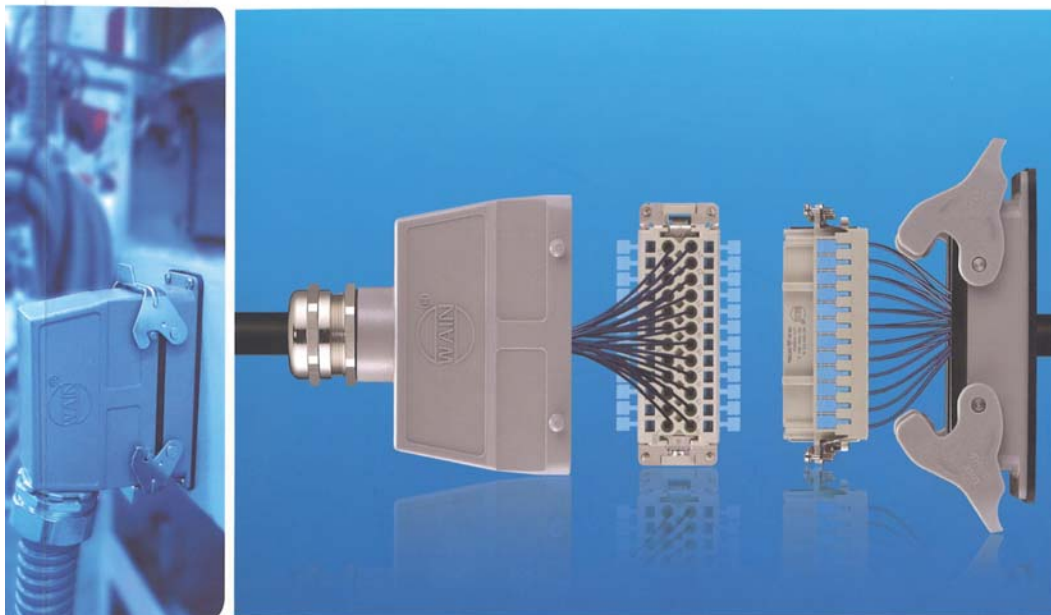


産業用防水防塵角型コネクタ



Heavy Duty Connector

製品概要

Heavy duty connector

Heavy duty connector

Heavy-duty connector is specially designed for rigorous environment and applicable to industrial automation, equipment manufacturing, industrial system connection as well as information and control technology. Compared with traditional connection type, heavy-duty connector can save 20-30% of installation cost for machining center, increase production efficiency and reduce error ratio of wiring.

With the in-depth development of industrial automation, more innovation is brought about in mechanical products, for example, many products adopts modular design and successively extends their functions according to the application needs. Heavy-duty connector employing pneumatic module, large current module, electromagnetic shielding module and D-Sub module not only achieves fast and barrier-free connection among modular equipments, but also guarantees the transmission of signal and power supply. For mechanical equipment manufacturers, it can offer secure and reliable connection, save installation time and reduce overall cost of production. For end-users, they can install and operate the equipment smoothly without the guide of any professional personnel, making the maintenance easier. This not only increases the effectiveness and utility of mechanical equipment, but also reduces time for equipment installation and maintenance.

WAIN Electrical is a comprehensive professional enterprise integrating R&D, production and sales of industrial connector (heavy-duty connector). Our Company has modern workplaces such as injection molding workshop, hardware workshop, die-casting workshop, electroplating workshop, assembly and diemaking workshop, etc. We also boast of laboratories for product R&D and product performance testing, and various technological patents. Dedicated to providing high-quality products for industrial connection systems, our Company has thousands of series products, capable of meeting the requirements for electrical or signal connection in different fields and occasions.



Product applications

Product applications

- Energy
- Rail transit
- Machine manufacturing
- Automation

Certification

Certification

VDE Certification CSA Certification UL Certification CE Certification

CCC Certification ISO 14001 Certification ISO 9001 Certification

More information, please visit the following website: www.wainconnector.com



- Maintenance convenience
- Rapid surefooted installation
- Flexible expansion
- Protection level IP68

” WAIN provides stable and reliable electrical connection for variable pitch blades and slip rings.



■ Speed frequency tank



■ Fan hub warehouse



■ Pitch system

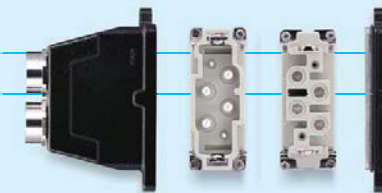
” Connectors in wind power generation

Wind power generation is the most mature way of power generation, which is qualified for large-scale development and has commercial development prospect. It has made great progress over the last few years. Reliability of operation and fast replacement of system are crucial for wind power station.

WAIN Connector provides reliable electrical connection solutions for wind power generation. The connectors of HC, HE, RJ45, HR23 and other product series can satisfy various connections of strong current and weak current in different applications of wind power.

” HK Combination Connectors

- Combination of power and signal area in one connector
- up to 100A current connection
- Match degree of protection IP65 or IP68 hoods & housings
- is one kind of perfect connector for strong current connection in narrow space.





” In order to meet the heavy-current and high-voltage requirements in power generation, WAIN provides HD HDD series and H version shell to build a secure and stable system.



■ Vacuum circuit breaker



■ High-tension switch cabinet



■ Box-type substation

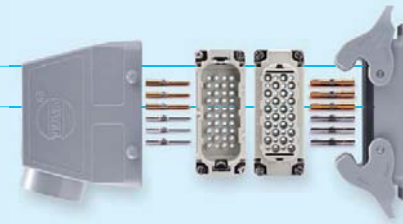
” Connectors in Electric power industry

Reliability, safety, economic efficiency, energy efficiency and environment-friendliness are important indicators of power grid operation. Therefore, new-type intelligent power grid taking physical power grid as foundation and integrating advanced sensor measurement technology, communication technology, information technology, computer technology and control technology is an important way to reach these indicators.

The various model of WAIN Connector also facilitates the safety, reliable operation and intelligent transformation of power grid.

” HD HDD high pin count connector

- Simply maintenance
- High density of crimping contacts, up to 216 contacts
- Match degree of protection IP65 or IP68 hoods& housings



Connectors in Rail transit

Due to further specialization of labor and requirements for convenient maintenance, the modular design of components in the railway traffic technology is being attached with more and more attention. WAIN Connector provides a complete solution for different electrical connections among all kinds of components, ensuring the safe and reliable coordinated operation of each component in various environments.



HM Agile and changeful combination

- Modular structure with high flexibility
- Compact structure saves space.
- Connectors can be assembled according to special requirement



WAIN provides connection solution with high protection grade for important occasions such as high-speed train, jumper wire of subway, air-conditioner and lighting, etc.



Jumper wire



Coupling end



Coupling end



Hauling system



WAIN achieves the transmission of power and signal by single connector and enables automation in the minimum space.

Use the least space to realize the automation

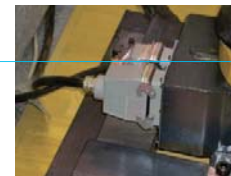
In the development of modern automation technology, flexibility is a very important indicator, including flexibility and convenience of installation, use, production and commissioning.

HE, HEE, HK, HM and other product series of WAIN Connector and optional shells with IP65/IP68 protection grade and various kinds of outlet and lock catch can satisfy the requirements in all kinds of space and all sorts of electrical connection.



HM Combined suite

- Modular structure
- universality, reducing inventory
- realize the power and signal transmission in the least space
- meet electrical or signal connecting requirements in different fields and for different purposes



Outer joint



Control system

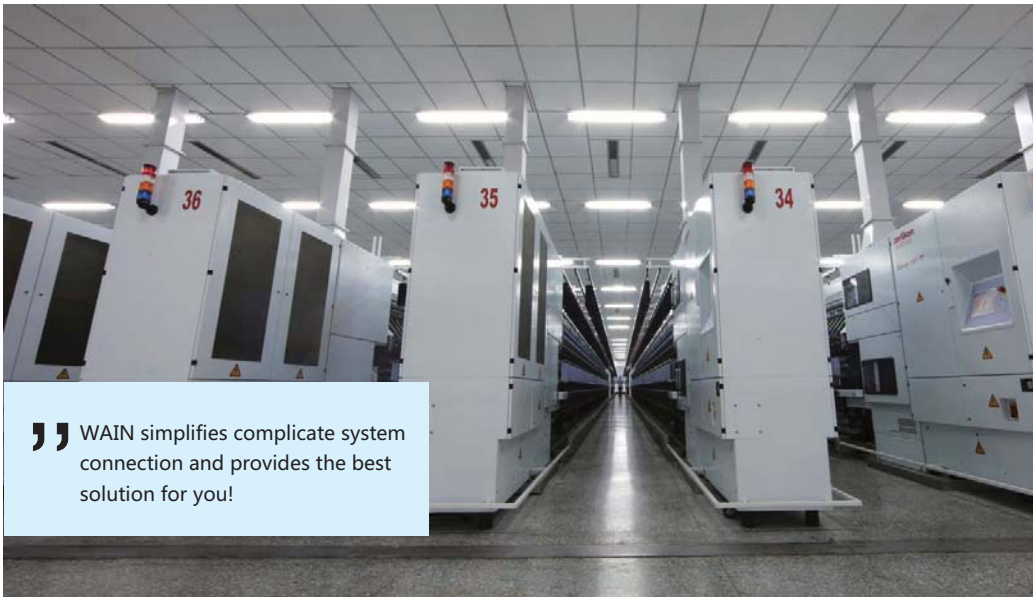


In control system

» Connector in machinery manufacturing

In machinery manufacturing field, due to the diversified equipment and space requirements, light, gas and other media are also needed to be transmitted in some cases, besides weak current and strong current.

WAIN Connector provides integral solutions for this; it not only has many electrical connectors, but also has connectors for other media (such as gas connector). It can satisfy different applications of various kinds of equipment, and simultaneously connect electrical circuit and gas circuit in a connector if necessary.



» WAIN simplifies complicate system connection and provides the best solution for you!



» HQ compact connectors

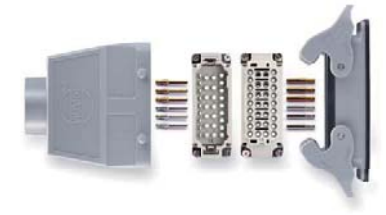
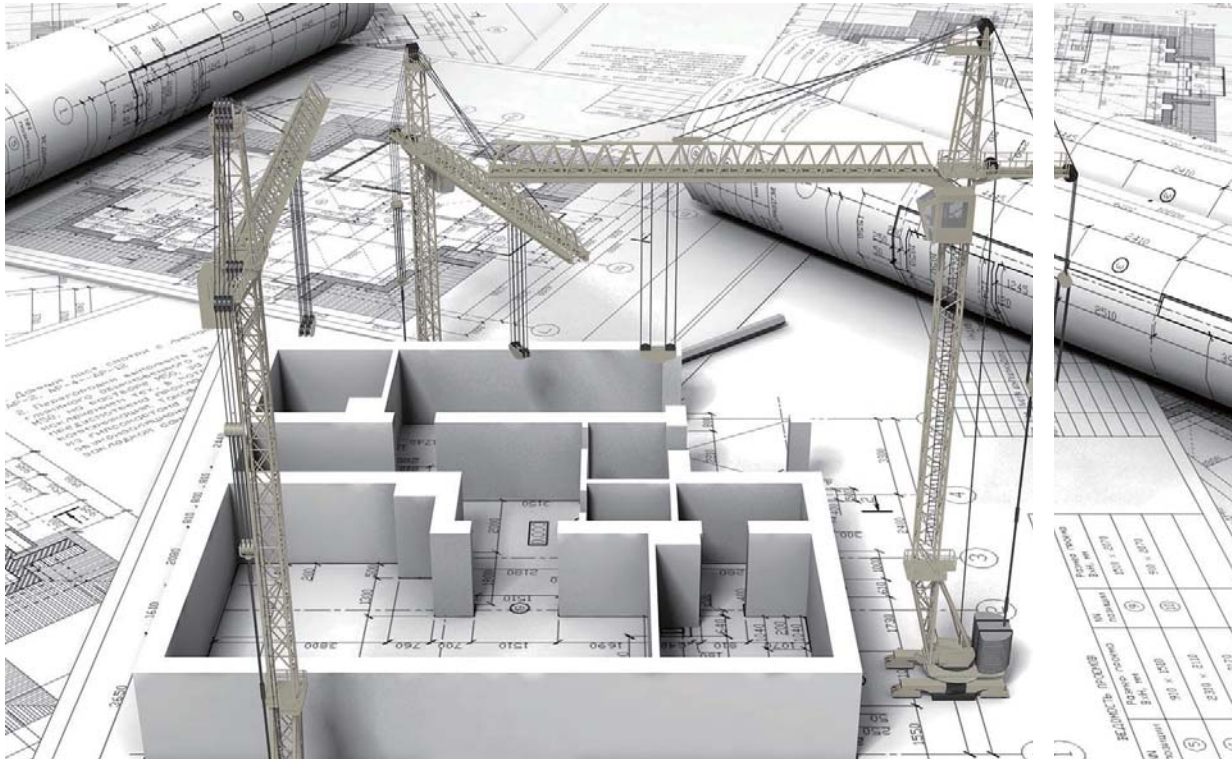
- Simply maintenance
- Compact structure, space saving
- It can match high protection shell or EMC hoods& housings



» Connector in engineering machinery

The future demands for diversification, high rise, beautiful appearance, energy conservation and environmental protection in construction industry will absolutely promote the development of engineering machinery.

WAIN Connector, boasting of dozens of series, thousand of models, strong current connection up to 650A and shells with IP65/IP68 protection grade, provides reliable electrical connection for the high-end and intelligent development of construction machinery.



» HEE High density connectors

High density of crimping contacts, up to 92 pins ■

Polarised insert ■

Contacts available with either hard silver plated or hard gold plated surface ■

Different protection level and line way of the shell for choose ■



■ External connection system box

■ Control system